



Contact: **Suncoast Sportplanes, Inc**
 2003 Mainsail Drive
 Naples, FL 34114
 Tel/Fax: (239) 394 6800
 Email: info@suncoastjabiru.com
 Web: www.suncoastjabiru.com

JABIRU 2200 AERO ENGINE - 80 hp

Description

- 4 Stroke
- 4 Cylinder Horizontally Opposed
- 1 Central Camshaft
- Push Rods
- Over Head Valves (OHV)
- Ram Air cooled
- Wet Sump Lubrication
- Direct Propeller Drive
- Dual Transistorised Magneto Ignition
- Integrated AC Generator
- Electric Starter
- Mechanical Fuel Pump
- Naturally Aspirated - 1 Pressure Compensating Carburettor
- 6 Bearing Crankshaft

All Jabiru Engines supplied complete including muffler, alternator, regulator, starter motor and relay, RAMAIR cooling ducts, etc.

Specifications

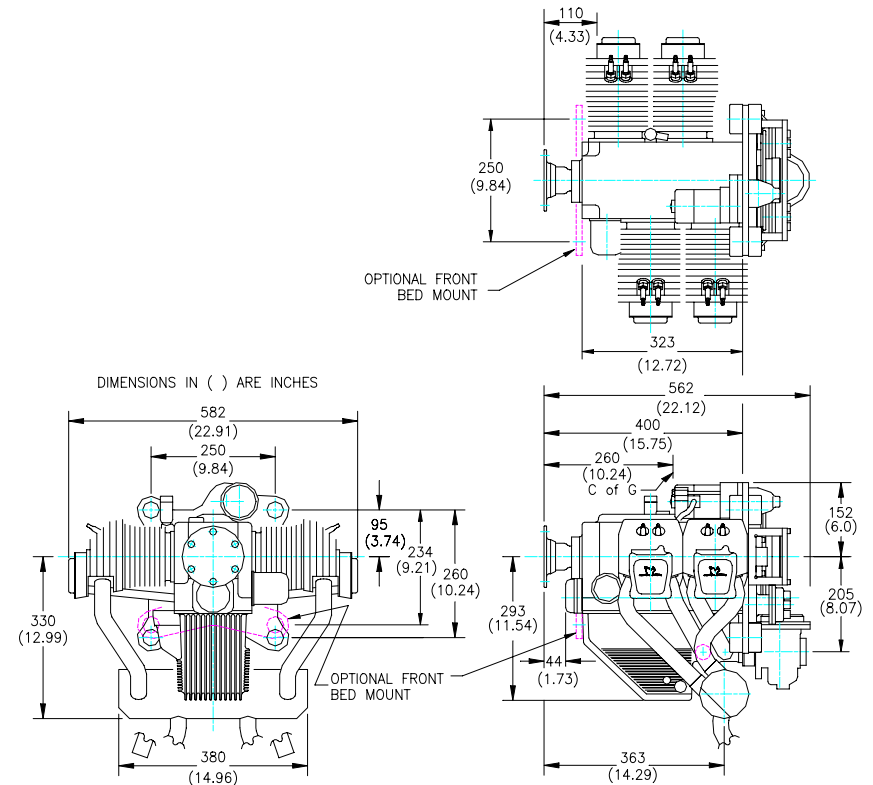
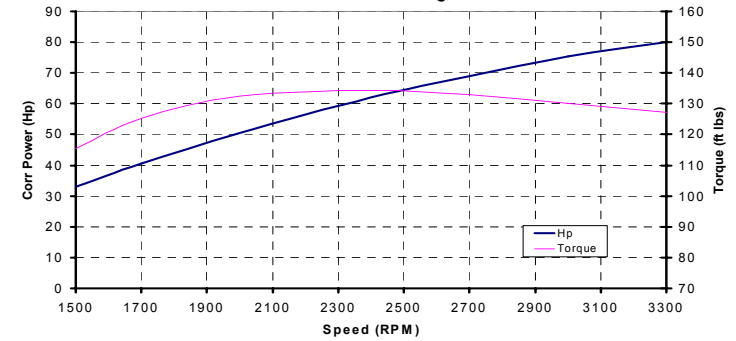
- Displacement : 2200 cc
- Bore : 97.5 mm
- Stroke : 74 mm
- Compression Ratio : 8.3:1
- Direction of Rotation of Prop Shaft : Clockwise - Pilot's view - Tractor Applications
- Ramp Weight : 60 kg (132 lbs) Complete including Exhaust, Carburettor, Starter Motor, Alternator & Ignition System
- Ignition Timing : 25° BTDC
- Firing Order : 1 - 3 - 2 - 4
- DC Output : 10 Amps
- Power Rating : 60 kW (80 hp) @ 3300 RPM
- Fuel Consumption @ 75% power : 15 l/hr (4 US gal/hr)
- Fuel : AVGAS 100/130
- Oil : Aeroshell W100 or Equivalent
- Oil Capacity : 2.3 l (2.2 quarts)
- Spark Plugs : NGK D9EA - Automotive

* Engine Specifications may be subject to change at any time.

DIMENSIONS & PERFORMANCE

2200 - 80 hp

Engine Performance Curves
 Jabiru 2200A Engine



Drawing 9404041/1 2200 ENGINE DIMENSIONS